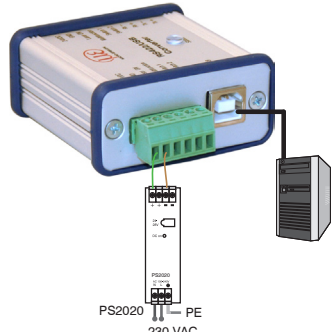


Wiring Recommendations

- 

Connect the converter to a power supply unit <sup>1</sup>, for example PS2020.
- 

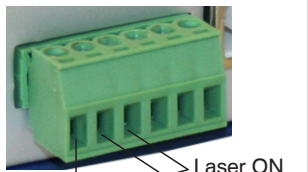
Connect the converter to a free USB interface to start the driver installation, see Chap. Installation USB Driver, also.
- 1) Not required with optoCONTROL 2xxx sensors.




Connections for supply/control

Connections to 6-Pole Terminal Block

Terminal Converter
24 VDC
GND
Laser ON
Multifunction
Switch 1
Switch 2





- 

Connect GND with Laser ON to permanently activate the laser light source in the sensor <sup>1</sup>.

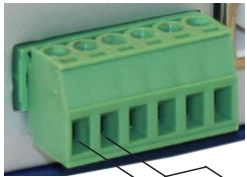
Power Supply

Nominal value: 24 VDC

- 


Switch on the power supply unit <sup>1</sup>, once wiring is completed.
- 

Connect the 24 VDC and GND inputs at the converter with a 24 V power supply.



24 VDC


Supply voltage connection



Voltage supply only for measuring devices, not to be used for drives or similar sources of impulse interference at the same time. MICRO-EPSILON recommends using the optionally available PS2020 power supply unit.



RS422 Connections to 10-Pole. Terminal Block

	Terminal Converter	ILD1220 ILD1320	ILD1420	ILD1900	ILD2300	ILD5500	ILD5500		ODC2520	ODC2700	ILR1171	ILR3800	IMS5x00 IMS5420 IFC2421/22 IFC2465/66	IFD2410/2415	IFC2411/2416 IFC2412/2417	MFA-7/14/21/28
		Direct connection	PCF1420-x/I	PC1900-x/OE	PC2300/OE PC2300-0.5/Y	PC5500-x/OE	PC5500-x/OE-RJ45	int. cable	PC/SC2520-x	PC/SC2700-x	PC1171-x	PC3800-x	SC2471-x/RS422/OE	PC2415-x/OE PC2415-1/Y	SC2415-x/OE	CAB-M12-8P-St-ge;2m-PUR
	24 VDC	Red	Red	Red	White	Red	Red		Red	Red	Red	Red	<sup>2</sup>	Rot	<sup>2</sup>	Brown
	GND	Blue	Blue	Blue	Brown	Blue	Blue		Black	Blue	Red/Blue	Blue	Yellow	Blue	Blue	White
	Laser ON	Black	Black	Black	-	Black	Black		-	-	-	-	-	-	-	-
	Multifunction	Purple	Purple	Purple	-	Purple	-		-	-	-	-	-	-	-	-
	Switch 1	Brown	Brown	Brown	-	Brown	-		-	-	-	-	-	-	-	-
	Switch 2	n.c	n.c.	White	-	White	-		-	-	-	-	-	-	-	-
	Rx-	Pink	Pink	Pink	Purple	Pink	Pink-black		Yellow	Gray	Yellow	Pink	White	Yellow	Black	Blue
	Rx+	Gray	Gray	Gray	Black	Gray	Gray-black		Gray	Pink	Green	Gray	Gray	Green	Purple	Red
	Tx-	Yellow	Yellow	Yellow	Red	Yellow	Yellow-black		Green	Yellow	Pink	Brown	Green	White	White	Pink
	Tx+	Green	Green	Green	Blue	Green	Green-black		Brown	Green	Gray	White	Brown	Brown	Brown	Gray

2) Supply voltage is supplied individually.



Installation of USB Driver

➡ Install the corresponding FTDI Virtual COM Port Driver before you use the converter for the first time.

You can find the current driver at:  
[https://www.micro-epsilon.com/fileadmin/download/software/FTDI\\_VCP\\_Driver.zip](https://www.micro-epsilon.com/fileadmin/download/software/FTDI_VCP_Driver.zip)

➡ Now install the driver as follows: <sup>3</sup>

➡ Unpack the driver (.zip file).

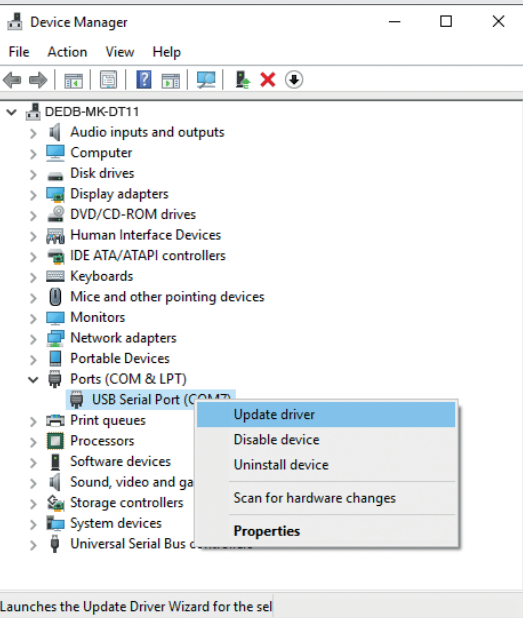
➡ Connect the sensor/controller with the USB converter.

➡ Connect the USB converter with a free USB port of a PC/notebook.

➡ Connect the converter with a power supply.

➡ Start the device manager under Control Panel > Hardware and Sound > Devices and Printers > Device Manager.

➡ Right-click the entry USB Serial Port and select Update driver.

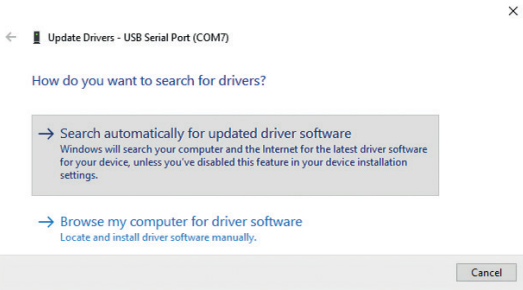


<sup>3)</sup> Valid for Windows 10

A window opens where you can choose among two possibilities:

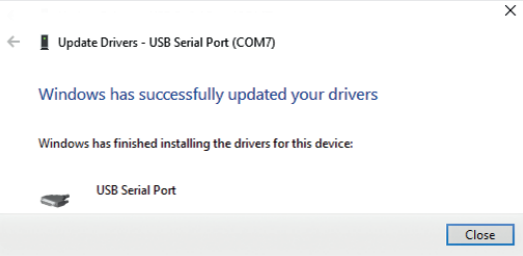
Automatic Installation

➡ Choose Search automatically for updated driver software.



Windows will search your computer and the internet for the latest driver software for your device, unless you have disabled this feature in your device installation settings.

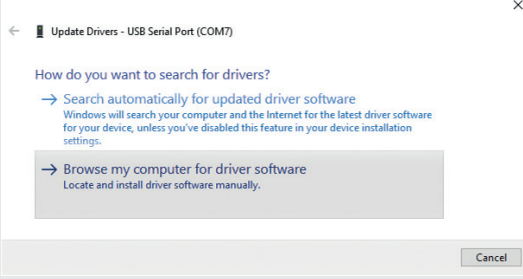
The routine now starts the installation of the driver.  
➡ Click on the Close button to complete the installation.



Manual Installation

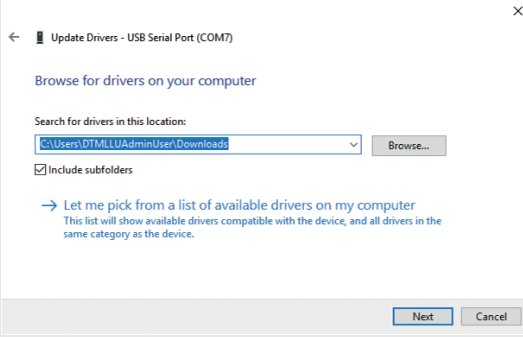
Locate and install the driver software manually.

➡ Choose Browse my computer for driver software.



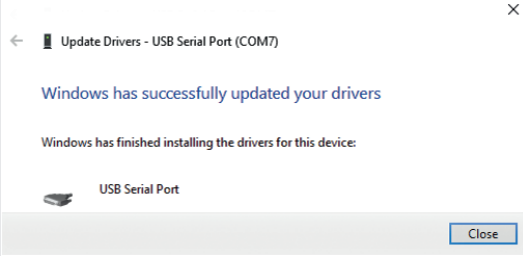
➡ Now use Browse to find the driver in the path where you saved it when you downloaded it from the web page.

➡ Go to Next.

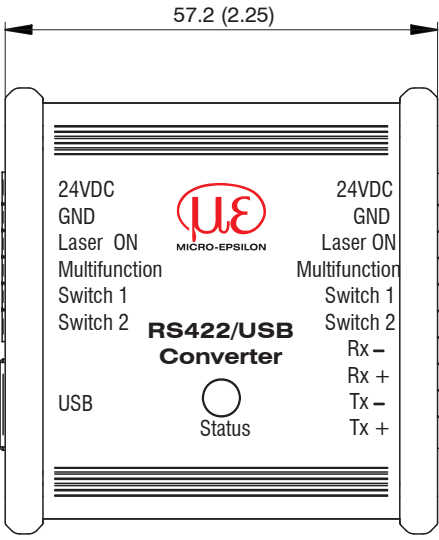
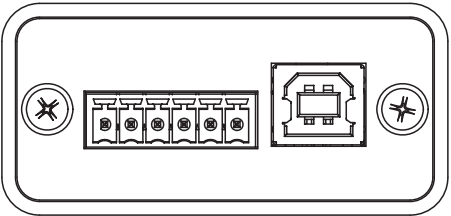
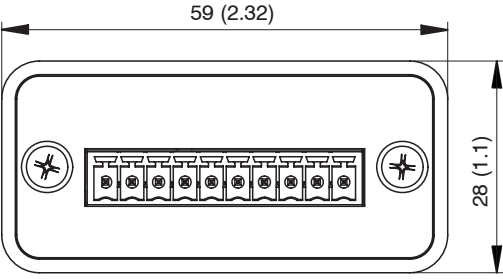


The routine now starts the installation of the driver.

➡ Click on Close button to complete the installation.



Dimensional Drawing



Dimensions in mm (inches)

Unpacking, Included in Delivery

- 1 IF2001/USB converter
- 1 USB cable
- 1 Assembly instructions

MICRO-EPSILON MESSTECHNIK GmbH & Co. KG  
Koenigbacher Str. 15 • 94469 Ortenburg / Germany  
Tel. +49 8542 / 168-0 • Fax +49 8542 / 168-90  
info@micro-epsilon.com • www.micro-epsilon.com  
Your local contact: [www.micro-epsilon.com/contact/worldwide/](http://www.micro-epsilon.com/contact/worldwide/)